

Energy Analysis Kit



WÄTTWÄTT



Your spy in the distribution box...

Unbalanced phases are often the reason for unnecessary overrated main fuses.

Mätman Energy Analysis Kit offers a simple way of analysing the phase loads in an electrical installation and supplies the answers to the following questions:

Are the phases evenly balanced?

Are peak power loads temporary?

Is it possible to reduce the rating of the main fuses?

Simple and safe to use

Exchange the fuse caps to the *Eltex* measuring fuse caps and clip on the current transformers. Press the start buttons – this starts the measuring process.

Of course the clip-on current transformers can measure directly, if the fuses are removed from the central unit.

Load, log and dump

At your PC, you activate the data logger and dump the recorded measurements from the data logger. The measurements can then be shown as a graph or table as required. In the field, *Mätman* works independently when the start/stop button is pressed. It cannot be simpler.

Mätman Energy Analysis Kit:



Mätman Combi, part no. 18511

Current transformers, 0–200A, part 18551

Fuse caps, 16–25 A part no. 3972



Temp sensor 18521



Line voltage sensor 18552



It is simple to install Mätman Energy Analysis Kit in the main distribution box and analyse the current consumption.

Exchangeable sensors – more measure functions

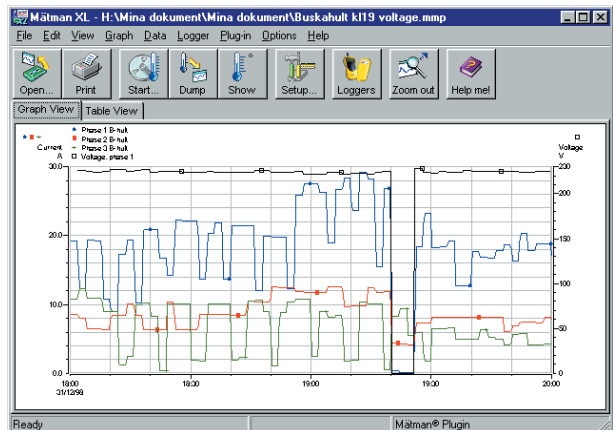
Mätman Energy Analysis Kit can also be used to measure line voltage and temperature. The case includes a line voltage sensor, which can be connected to an ordinary line outlet, and a temperature sensor with a measuring range of -35 to +140°C.

The case has capacity for additional accessories. Enhance your *Mätman* further, with more additional *Mätman* data loggers, measuring fuse caps for E33-tap or other sensors (e.g. for signals 0–10 V and 0–20 mA).

The case can be delivered without measuring fuse caps and it can be equipped with more data loggers and other sensors according to customer requirements.

The spider in the web – Mätman XL 3

Our new, powerful 32-bits software, *Mätman XL3*, makes it simple to process the measurements and make clear presentations.



Visualise the scene – New Year's Eve at 7:20 p.m., one of the main fuses blows in the house, not surprising, with such imbalance between the phases. (Mätman XL 3 software or PC-cable is not included)

Retailer:

