

ELTEX
OF SWEDEN



MÄTMAN COMBI

Data Logger with interchangeable sensors

Efficient and easy to use

Data logger with interchangeable sensors

Mätman Combi is the perfect tool for logging different types of data. It works on its own without being connected to an external power source. It is very easy to use.

There are many different accessories available for the Mätman Combi including: Various temperature sensors, current clamp, voltage sensor, and signal converters.

Simply change the accessory and Mätman Combi becomes a new tool.

Thousands of satisfied users in real estate maintenance, electrical industry, and food safety have already discovered the benefits of Mätman Combi.

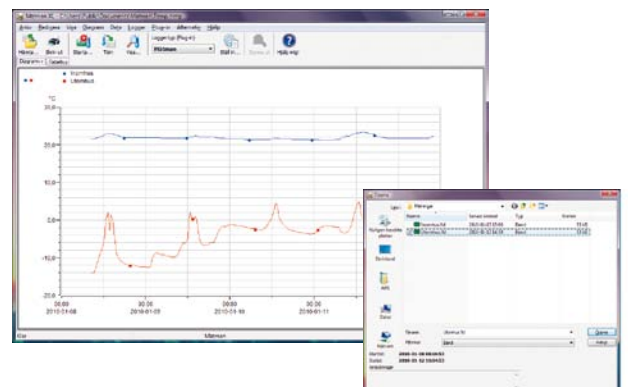
Mätman Combi forms the foundation of our popular measuring kits: Energy Analysis and Real Estate analysis (see separate brochures).

Mätman XL 4

Mätman XL 4 is the PC software that synchronises with Mätman Combi to produce spreadsheets, etc. It represents the very latest in software technology, combining simplicity with high performance.



Mätman is small and works without an external power supply.



Measured results are presented clearly for easy and precise evaluation.



USB connection for fast synchronisation to the PC.



Property -

Record temperature and other important data relevant to real estate maintenance and administration.



Energy -

Record voltage, current and temperature fast and easy.



Food -

Record temperature during storage/transportation of food.

Technical Data Mätman Combi

Start / stop time is programmable, rolling memory or via the button.

The sensor can be calibrated with Mätman XL4 PC program.

12 bit A / D converter.

Measurements are time/date/name stamped.

Log Interval adjustable from 1 sec to 12 hr.

Functions indicated via blinking LED.

Operating temperature of device itself:

-35 °C to +70 °C.

Battery life minimum 1 year. Easy to change.

Size: 42x97x26 mm.

Weight: 50g excluding sensors.



Voltage probe 230 V AC
Part.no. 18552



Current clamp 200A
Part.no. 18551



Sensor head Combi, NTC
-35°C to +140°C, 1m cable
Part.no. 18521



Sensor head Combi, 0-20mA / 0-10V DC
Part.no. 18540

Retailers: