

ELTEX weft sensor ANTI-2

with logic current output



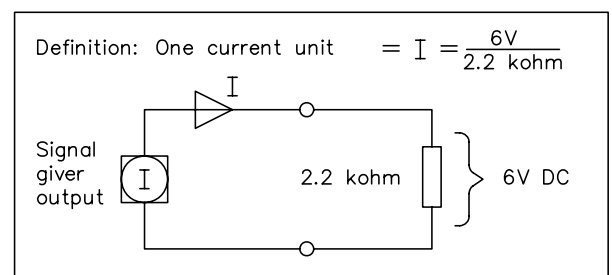
General description

The ANTI-2 weft break sensor is working on the piezoelectric principle. The yarn movement is transferred into an electrical signal, which is amplified and evaluated within the sensor. The weft sensor has a logic current output and is manufactured with 8 eyelets.

A green light emitting diode indicates when a yarn is moving.
The ANTI-2 weft sensor will detect if a second weft is inserted by mistake.
A red light emitting diode on the sensor will indicate if the machine has stopped because too many weft yarns were inserted.

Function and description

Eyelet diameter	7 mm
Power supply	24 V DC (16–28 V DC)
Current consumption	50 mA



Sensitivity setting is made through a DC voltage 0–6.5 V, normally from the central control unit. Some models have a potentiometer for the sensitivity setting.

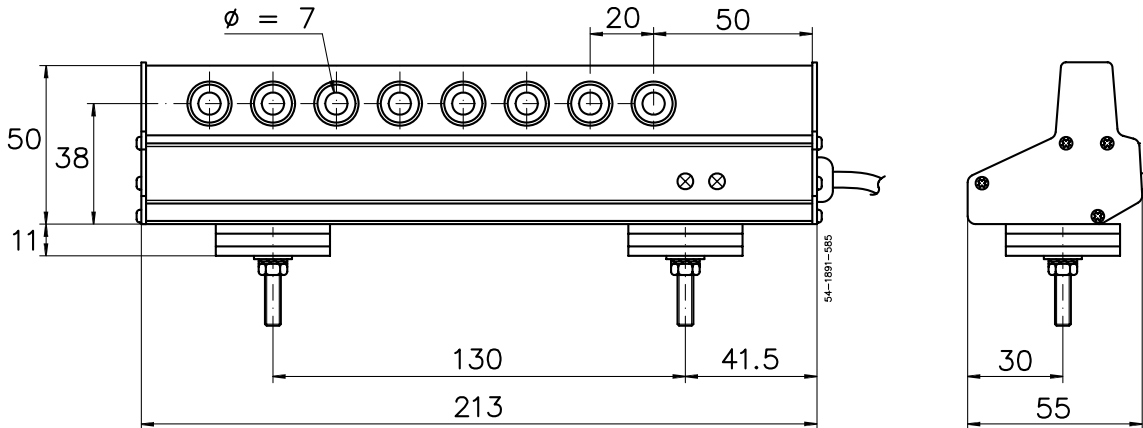
The movement of the yarn is best detected if the yarn angle is 10–15° through the eyelet.

Output: The weft sensor will send one current unit as output if one weft yarn is moving. If the weft sensor finds two eyelets with moving yarns, this will result in two current units on the output.

To be able to detect if an extra weft yarn is inserted even if this extra yarn is dropped during the insertion, it is necessary to have two sensing periods. The first sensing period will be before the transfer point and the second at the very end of the yarn insertion.

The ANTI-2 weft sensor is scanning the eyelets to find if two wefts are moving. Therefore it is advisable to start the first sensing period at least 35 ms after the weft insertion has started.

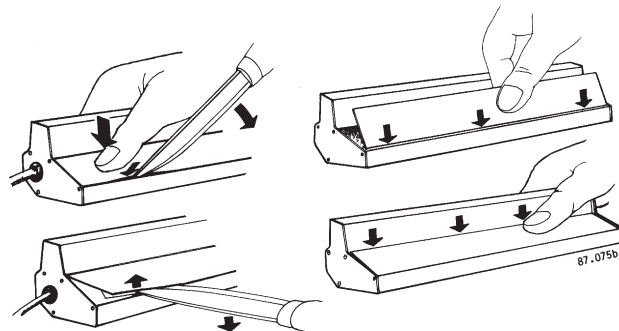
Measures (mm)



Connection

+ 24 V	1	Red	6	1
Signal	2	Grey	1	4
Gain	3	Blue	5	2
⊥	4	Black	9	3

How to open and close the lid



The ANTI-2, E2060 Weft Sensor has been replaced by the G3w model

54582 Replaced by the kit no: 321 (58540, G3w Weft Sensor + 63652 Adapter)

54585 Replaced by: 58540, G3w Weft Sensor + 63565 Adapter Cable



Box 24 • SE-283 21 OSBY • Sweden • Tel. +46 479 53 63 00
E-mail: info@eltex.se • Web: www.eltex.se

ELTEX U.S. INC.
13031 E. Wade Hampton Blvd.
GREER, South Carolina, 29651
USA
Tel.: +1 864-879-2131
E-mail: sales@eltexus.com

ELTEX MFG LTD
Railway Road
Templemore, Co. Tipperary
Ireland
Tel: 504-314 33
E-mail: info@eltex.ie

POLSA-ELTEX S.L.
Zamora, 103 - entlo 3
ES-08018 Barcelona
Spain
Tel: 093-309 00 17
E-mail: polsa@infonegocio.com