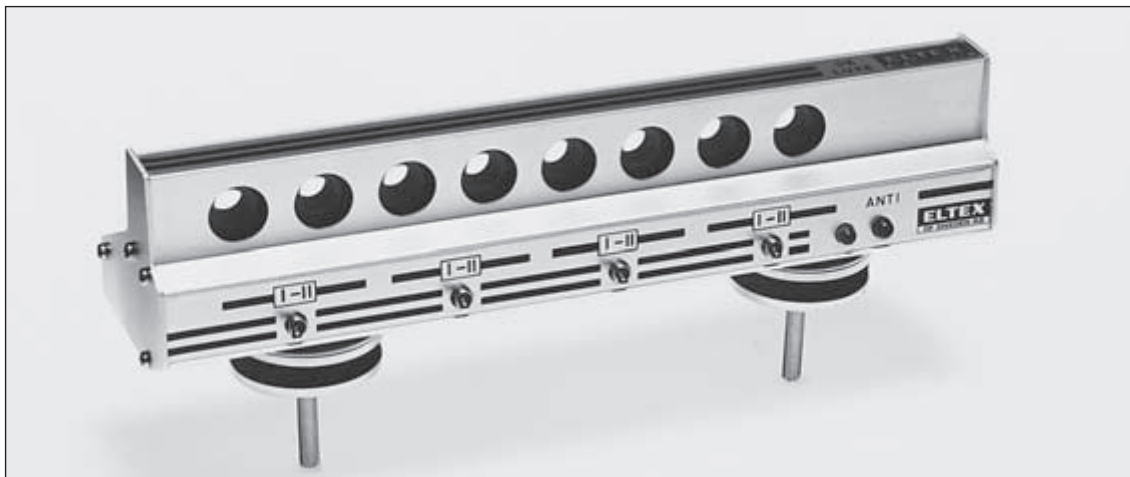


ELTEX weft sensor E2070

with logic current output



General description

The E2070 weft break sensor is working on the piezoelectric principle. The yarn movement is transferred into an electric signal, which is amplified and evaluated within the sensor. The weft sensor has a logic current output and is manufactured with 4 or 8 eyelets.

A green light emitting diode indicates when a yarn is moving.

The E2070 weft sensor will detect all eyelets

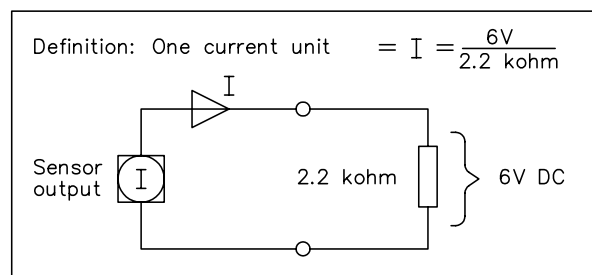
independently. This makes it possible to detect double or multi weft insertions, and also to detect if too many wefts are inserted.

Single-Double switches on the wft sensor makes it possible to set up pairs of eyelets for double weft insertions (see also below).

A red light emitting diode on the weft sensor will indicate if the machine has stopped because too many wefts were inserted.

Function and description

Eyelet diameter	7 mm
Power supply	24 V DC (16–28 V DC)
Current consumption	125 mA



Sensitivity setting is carried out through a DC voltage 0–6.5 V, normally from the central control unit. Some models have a potentiometer for the sensitivity setting.

The movement of the yarn is best detected if the yarn angle is 10–15° through the eyelet.

Output: The weft sensor will send one current unit as output for each eyelet that detects a moving weft yarn. If one pair of eyelets are set up for double weft insertions they will each send half a current unit, i. e. the pair of wefts will together result in one current unit (see also below).



ELTEX U.S. INC.
P.O. Box 868
Greer, S C 29652-0868
USA
Tel: 864-879-2131
In U.S. toll free
1-800-421-1156
Fax: 864-879-3734
Email: sales@eltexus.com

Box 608 • SE-343 24 ELMHULT • Sweden • Tel. +46 476 488 00 • Fax +46 476 134 00
E-mail: public@eltex.se • Web: www.eltex.se

ELTEX (U.K.) LTD
Lane Close Mills/Bartle Lane
Great Horton
Bradford BD7 4QQ
England
Tel: 01274-57 10 71
Fax: 01274-50 12 09
Email: general@eltex.co.uk

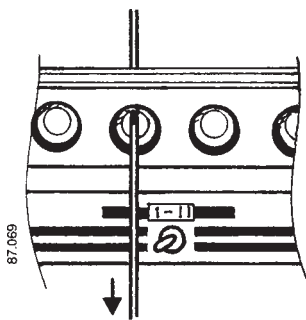
ELTEX MFG LTD
Railway Road
Templemore, Co. Tipperary
Ireland
Tel: 504-314 33
Fax: 504-310 02
Email: public@eltex.ie

ELTEX OF SWEDEN GMBH
c/o Frank Widmann e.K.
Murgstrasse 13
DE-76337 WALDBRONN
Germany
Tel: 07243-767268
Fax: 07243-61216
Email: a.f.widmann@t-online.de

POLSA-ELTEX S.L.
Zamora, 103 - entlo 3
ES-08018 Barcelona
Spain
Tel: 093-309 00 17
Fax: 093-309 59 45
Email: polsa@infonegocio.com

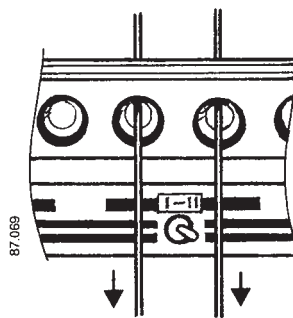
Definition: The E2070 weft sensor can be used to detect most various combinations of weft insertions. The eight eyelets are divided into four pairs. Each pair has its own single-double switch. In this way it is easy to set up the weft

sensor for monitoring mixed single/double weft insertions, and in each case it is possible to detect if too many wefts are inserted. This weft sensor can also detect three and four wefts which are inserted in one pick.



Output:
One current unit

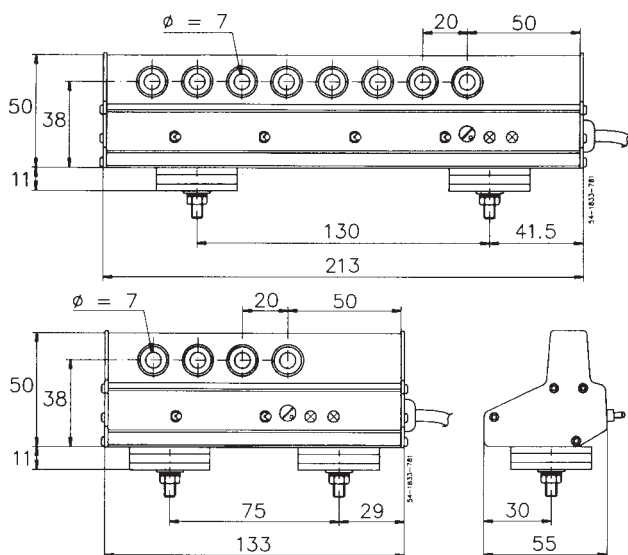
If the single-double switch is in single position, a weft movement in one eyelet will cause one current unit as output.



Output:
 $\frac{1}{2}I + \frac{1}{2}I = I$
One current unit

If the single-double switch is in double position, a weft movement in one eyelet will cause a half current unit. If two wefts are moving, one in each eyelet, the result on output will be one current unit.

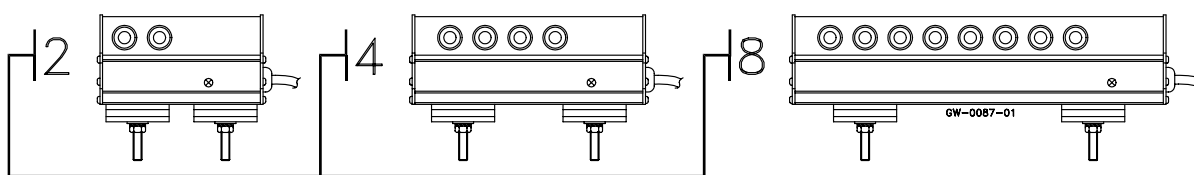
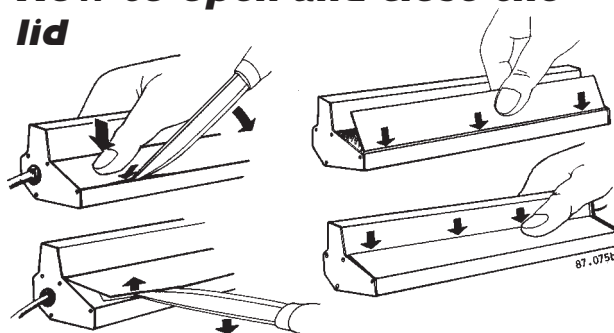
Dimensions (mm)



Connection

+ 24 V	1	Red	6
Signal	2	Grey	1
Gain	3	Blue	5
\perp	4	Black	9
			1
			4
			2
			3

How to open and close the lid



Types and article numbers

