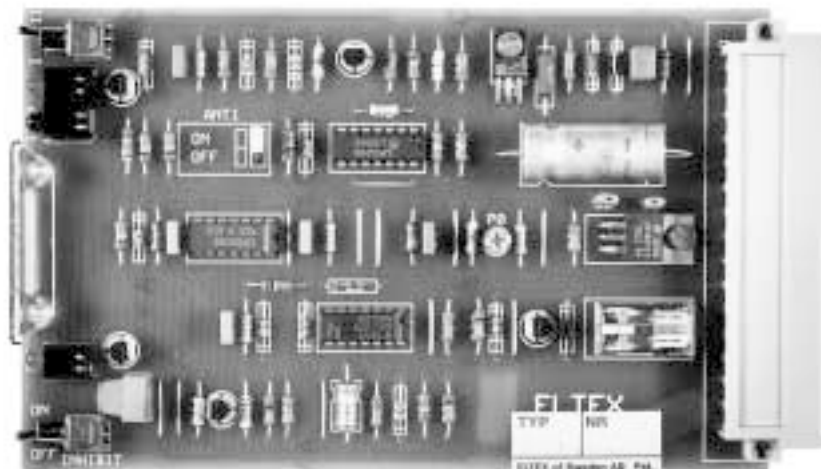


ELTEX Central Control Unit 28420

for ELTEX logic current signal givers



General description

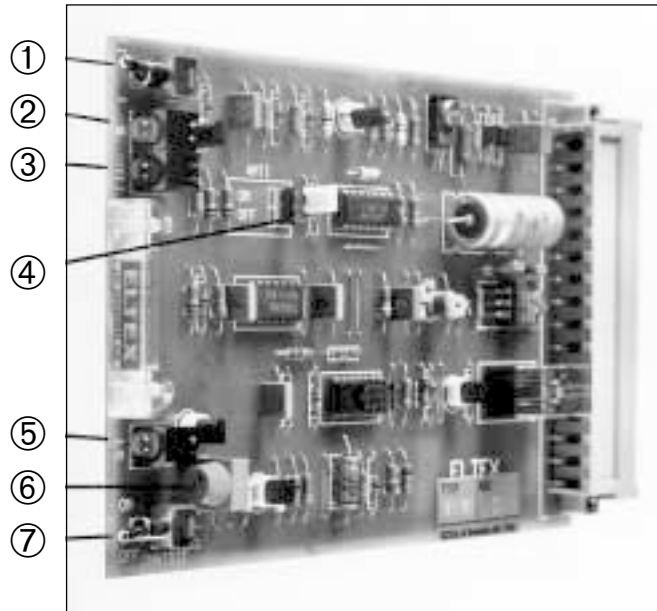
The 28420 electronic board is a central control unit used for Eltex signal givers (weft break sensors) with logic current output (E-type). The central control unit compares the signals from the signal giver and the light switch and gives a stop pulse to the weaving machine when necessary.

Function and specifications

Power supply	16-30 V DC. (16-24 V DC on units with serial number lower than 90380000)
Relay stop output	The relay is normally energized. As soon as a weft fault occurs, the relay will be deenergized.
ANTI-function	A weft stop motion with this electronic board and an E2070 or an ANTI signal giver can detect if too many yarns are inserted by mistake.
Size	Europe size board, 100 x 160 mm.
Models	28420 Europe connector DIN 41612 series F, 32 poles, row b + z. 28421 Europe connector DIN 41612 series D, 32 poles.
Fitting	The central control unit is designed to fit in the control box of the weaving machine. On machines where there is no connector available for this unit, use the 28420 unit fitted in the Eltex plastic case 13400.

Logic current principle

Eltex logic current signal givers are communicating with the central control unit by means of a DC current signal. When **one** yarn is moving, the signal giver is sending a certain amount of current, and this is called a "current unit". The central control unit can be set to detect one or two current units from the signal giver.



1. Single - Double switch

The switch has two positions:

Position I means that the correct signal is one current unit. If the central control unit receives more current from the signal giver, it will stop and indicate "ANTI-fault".

Position II means that the correct signal is two current units. If the unit receives less current, it will stop the machine. If the unit receives more than two current units, it will stop the machine and indicate "ANTI-fault".

2. Green LED L-S = Light Switch

This LED will light during the sensing periods. If weft stop inhibit switch is in "ON" position, no indication will occur.

3. Red LED Anti

If too many weft yarns have been moving at the same time during the sensing period, the central control unit will receive too many current units, and the machine will be stopped. This LED will then light. It turns off when the machine is re-started.

4. ANTI switch

The ANTI-function can be switched off. This is necessary when using the E2010-2 signal giver. To switch off, move the connection shunt to the "OFF" position.

5. Green LED S = signal

If the central control unit receives at least the correct amount of current units, this diode will light.

6. GAIN potentiometer

The sensitivity in the signal giver is adjusted by means of a 0-6.5V DC voltage from the central control unit to the signal giver.

7. Weft stop inhibit

Position "OFF" means that the weft stop motion is active. Position "ON" means that the weft stop motion is not active (inhibited) and the machine can run without weft.



Box 608 • SE-343 24 ELMHULT • Sweden • Tel. +46 476 488 00 • Fax +46 476 134 00
E-mail: public@eltex.se • Internet: www.eltex.se

ELTEX OF SWEDEN GMBH
c/o A.+F. Widmann GmbH
Descostrasse 9
DE-76307 KARLSBAD
Deutschland
Tel. 07248-1036
Fax 07248-5858
Email: a.f.widmann@t-online.de

ELTEX OF SWEDEN AG
Forchstrasse 300
CH-8008 ZÜRICH
Schweiz
Tel. 01-420 1150
Fax 01-420 1154
Email: eltex@bluewin.ch

ELTEX U.S. INC.
P.O. Box 868
Greer, S C 29652-0868
USA
Tel. 864-879-2131
In U.S. toll free
1-800-421-1156
Fax 864-879-3734
Email: eltexusinc@aol.com

ELTEX (U.K.) LTD
Lane Close Mills/Bartle Lane
Great Horton
Bradford BD7 4QQ
England
Tel. 01274-57 10 71
Telex 517258 ELTEX G
Fax 01274-50 12 09
Email: eltexuk@compuserve.com

ELTEX MFG LTD
Railway Road
Templemore, Co. Tipperary
Ireland
Tel. 504-314 33
Fax 504-310 02
Email: public@eltex.ie

